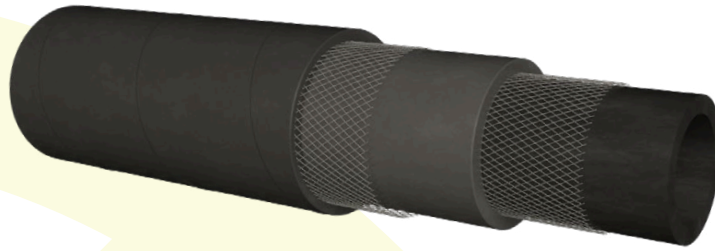


K-HYDRAULIC

KLEIN 

ACEITE Y PETRÓLEO
OIL & PETROL



Aplicación y Propiedades

Tubo construido sobre mandril especialmente indicado para circuitos de retomo óleo- hidráulicos.

Composición

Tubo interior: Caucho NBR negro.

Refuerzo: Textil sintético de alta tenacidad.

Cubierta exterior: Caucho NBR/PVC negro resistente a la abrasión, intemperie y derivados del petróleo. Impresión tela fina.

Longitudes de fabricación: Hasta 40 m

Gama de temperatura: DE -30°C a 100° C.

Application and Properties

Mandrel built hose specially recommended for hydraulic return systems.

Construction






Tube: Black NBR.

Reinforcement: High tensile synthetic textile yarns.

Cover: Abrasion, weather and petroleum based products resistant, black NBR/PVC. Wrapped finish.

Standard lengths: 40 m coils.

Temperature range: From -30° to 100° C.

 Diámetro Interior Internal Diameter		 Diámetro Exterior External Diameter		 Presión de Trabajo Working Pressure		 Presión de Rotura Bursting Pressure		 Peso Weight
mm	"	mm	"	bar	psi	bar	psi	kg/m
12	1/2	21	13/16	25	360	80	1150	0,38
15	5/8	24	15/16	25	360	80	1150	0,45
19	3/4	29	1 1/8	25	360	80	1150	0,6
25	1	38	1 1/2	25	360	80	1150	1,03
30	1 3/16	42	1 11/16	25	360	80	1150	1,07
32	1 1/4	44	1 3/4	25	360	80	1150	1,13
35	1 3/8	48	1 7/8	25	360	80	1150	1,35
40	1 9/16	56	2 3/16	25	360	80	1150	1,96
45	1 3/4	61	2 7/16	25	360	80	1150	2,15
50	2	66	2 5/8	25	360	80	1150	2,37