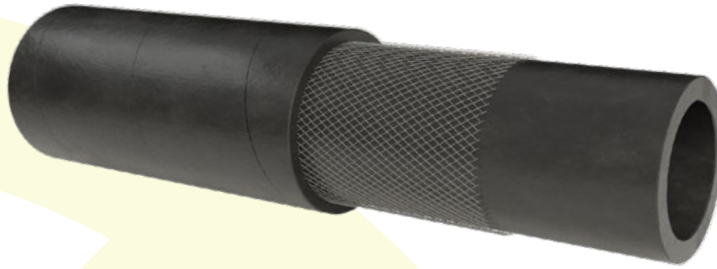


KLIA ISO 7840

KLEIN 

MARINA
MARINE



Aplicación y Propiedades

Tubo fabricado en continuo, resistente a la llama y autoextinguible destinado al Suministro de carburantes en embarcaciones. Cumple las especificaciones de ISO 7840, Certificado IMCI.

Composición

Tubo interior: Caucho NBR negro liso.

Refuerzo: Hilo textil de alta tenacidad.

Cubierta exterior: Caucho CR autoextinguible y resistente a la llama.

Gama de temperatura: De -20° a 80° C.

Application and Properties

Long length moulded hose. Fire resistant and self extinguish hose for conveying diesel and petrol in small crafts, Meets ISO 7840 standard. Certification IMCI.






Construction

Tube: Black NBR rubber.

Reinforcement: High tensile synthetic textile yarns.

Cover: Black CR rubber, fire resistant and self extinguishing. Wrapped finish.

Temperature range: From -20° to 80° C.

								
Diámetro Interior Internal Diameter		Diámetro Exterior External Diameter		Presión de Trabajo Working Pressure		Presión de Rotura Bursting Pressure		Peso Weight
mm	"	mm	"	bar	psi	bar	psi	kg/m
6	1/4	14	9/16	10	150	30	450	0,2
8	5/16	17	11/16	10	150	30	450	0,28
10	3/8	19	3/4	10	150	30	450	0,33
13	1/2	22	7/8	10	150	30	450	0,39
16	5/8	26	1	10	150	30	450	0,53
19	3/4	30	1 3/16	10	150	30	450	0,68
22	7/8	34	1 3/8	10	150	30	450	0,82
25	1	37	1 7/16	10	150	30	450	0,93