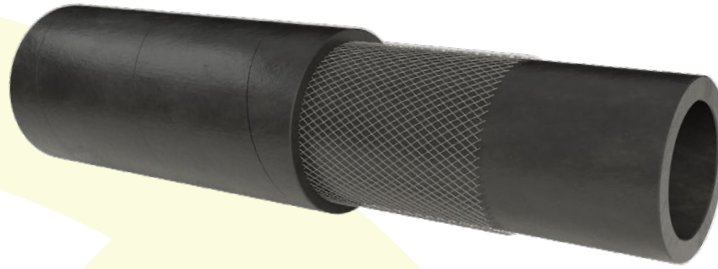


# K-RADIADOR

**KLEIN** 

AGUA CALIENTE  
HOT WATER



## Aplicación y Propiedades

Tubo construido sobre mandril para trasiego de agua caliente, anticongelante, etc, en circuitos de refrigeración de automóviles. Cumple la norma DIN 73411/A.

### Composición

**Tubo interior:** Caucho EPDM negro.

**Refuerzo:** Hilo textil de alta tenacidad.

**Cubierta exterior:** Caucho EPDM resistente a la intemperie. Impresión tela fina.

**Gama de temperatura:** De -40° a 125° C.

## Application and Properties

Mandrel built hose for hot water, antifreeze, etc, for cooling systems in motor vehicles, According to standard DIN 73411/A.






### Construction

**Tube:** Black EPDM rubber.

**Reinforcement:** High tensile synthetic textile yarns.

**Cover:** Black EPDM rubber, weather resistant. Wrapped finish.

**Temperature range:** From -40° to 125° C.

								
Diámetro Interior Internal Diameter		Diámetro Exterior External Diameter		Presión de Trabajo Working Pressure		Presión de Rotura Bursting Pressure		Peso Weight
mm	"	mm	"	bar	psi	bar	psi	kg/m
13	1/2	21	53/64	4	60	12	180	0,25
16	5/8	23	29/32	4	60	12	180	0,28
20	13/16	28	1 7/64	4	60	12	180	0,32
22	7/8	30	1 3/16	4	60	12	180	0,41
25	1	33	1 19/64	4	60	12	180	0,5
28	1 1/8	36	1 27/64	4	60	12	180	0,54
30	1 3/16	38	1 1/2	4	60	12	180	0,59
32	1 1/4	40	1 37/64	4	60	12	180	0,6
35	1 3/8	43	1 11/16	4	60	12	180	0,7
38	1 1/2	46	1 13/16	4	60	12	180	0,75
40	1 9/16	48	1 57/64	4	60	12	180	0,79
45	1 3/4	53	2 3/32	4	60	12	180	0,88
48	1 7/8	57	2 1/4	4	60	12	180	0,96
51	2	60	2 23/64	4	60	12	180	1,02
55	2 3/16	64	2 33/64	4	60	12	180	1,1
60	2 3/8	70	2 3/4	4	60	12	180	1,26
70	2 3/4	80	3 5/32	4	60	12	180	1,59
76	3	86	3 25/64	4	60	12	180	1,75
100	4	112	4 13/32	4	60	12	180	2,24